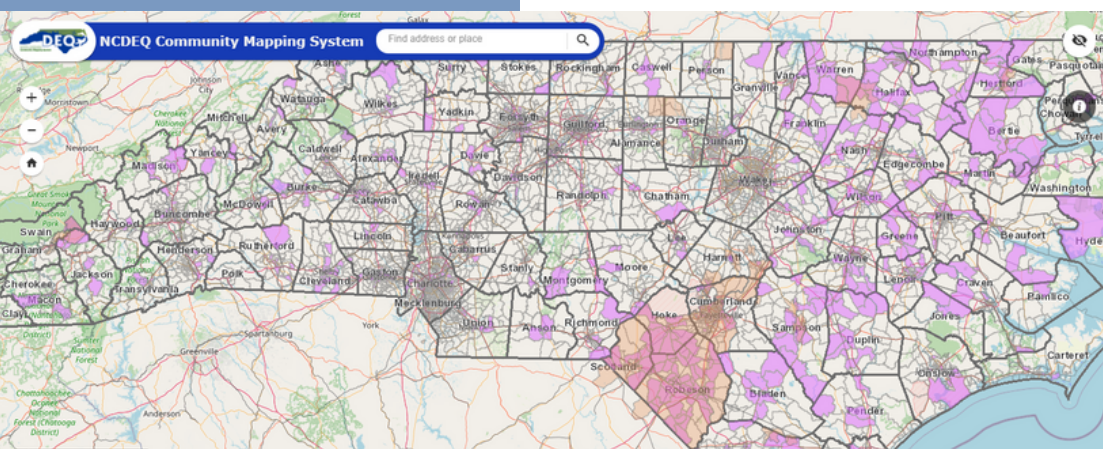




# COMMUNITY MAPPING SYSTEM

The NCDEQ Community Mapping System can be accessed at [tinyurl.com/community-mapping-system](https://tinyurl.com/community-mapping-system)



For more information on the Community Mapping System and other tools for your community, please visit [cwfn.org/tools](https://cwfn.org/tools)

## HISTORY OF THE MAPPING SYSTEM

The North Carolina Department of Environmental Quality (NCDEQ) created the Community Mapping System as part of a [Title VI Settlement Agreement](#).

The mapping system is on its second version, Version 1.0 after its beta release, which includes some updates and improvements based on community feedback. A contact form is still available to connect with the Department on [DEQ's website](#).

Clean Water for North Carolina  
[info@cwfn.org](mailto:info@cwfn.org) | 800-929-4480

## GET STARTED WITH THE COMMUNITY MAPPING SYSTEM

The Community Mapping System is a virtual tool provided by the NC Department of Environmental Quality. The mapping system has a variety of features that can help you better understand what information is available within an area.

At the bottom of the screen are several buttons:



Legend shows guide of which layers are selected, their colors and shapes.



Facility, Permit, and Incident Layers list includes several map layers, such as air quality permit sites.



Environmental Layers list includes conservation areas, flood zones, and underserved communities.



Basemap Gallery shows the available background maps.

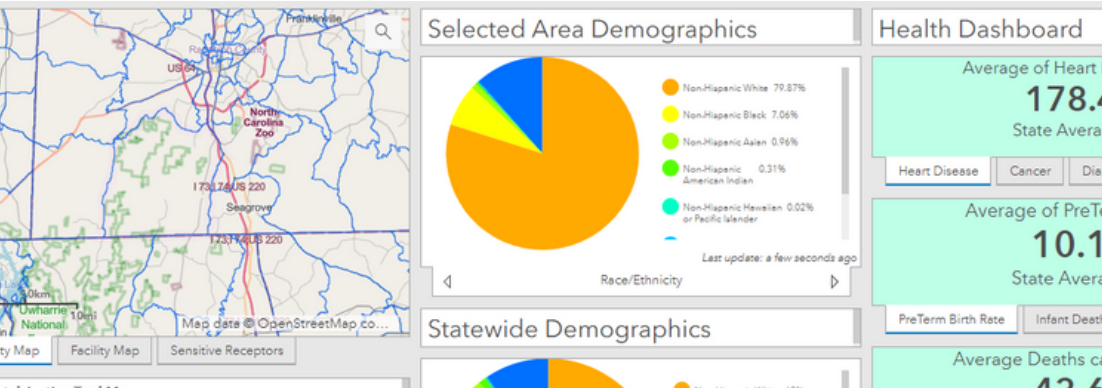


Info Summary shows a list of categories, such as hazardous waste sites or landfills, and the amount of locations for each category within the extent of the map.



Screening allows users to search for or designate an area and then create a report of locations within that specified radius.

# ADDITIONAL INFO



## ENVIRONMENTAL JUSTICE TOOL

After clicking on an open area of the map, a window will pop up with information about that specific census block group. From here, you can open the Environmental Justice Tool. There, several different types of information will be displayed.

*It is important to note that the information displayed in the EJ Tool correspond to all that is in view in the map.*

- To the left, three maps: the Community Map which includes demographic information in a pop-up; the Facility Map which displays all facilities in the map area; and Sensitive Receptors which shows locations where community members may be more susceptible to exposure to pollutants.
- The middle section includes the Demographic information of the area in view on the map, as well as a comparison to statewide data.
- The right-hand section shows the Health Dashboard. This includes health information corresponding to the area viewed in the map, with comparisons to state averages.

**For more information on the Community Mapping System—including a video tutorial, full glossary and other resources to support your community—please visit, [cwfn.org/tools](http://cwfn.org/tools)**

## CREATE A REPORT

After clicking the “Screening” button, you’ll see three tabs. The first, “Place name,” allows for you to search for a location and create an optional buffer distance in miles, kilometers, feet, or meters. The second, “Draw,” let’s you draw a location on the map. The third tab, “Coordinates,” lets you enter latitude and longitude coordinates or select them on the map.

After selecting an area, click “Report.” The size of your selected area will appear in square feet at the top of the window. You can change the unit of measurement by selecting the gear icon. You can also refresh your results, download them, or print them out using the other icons.